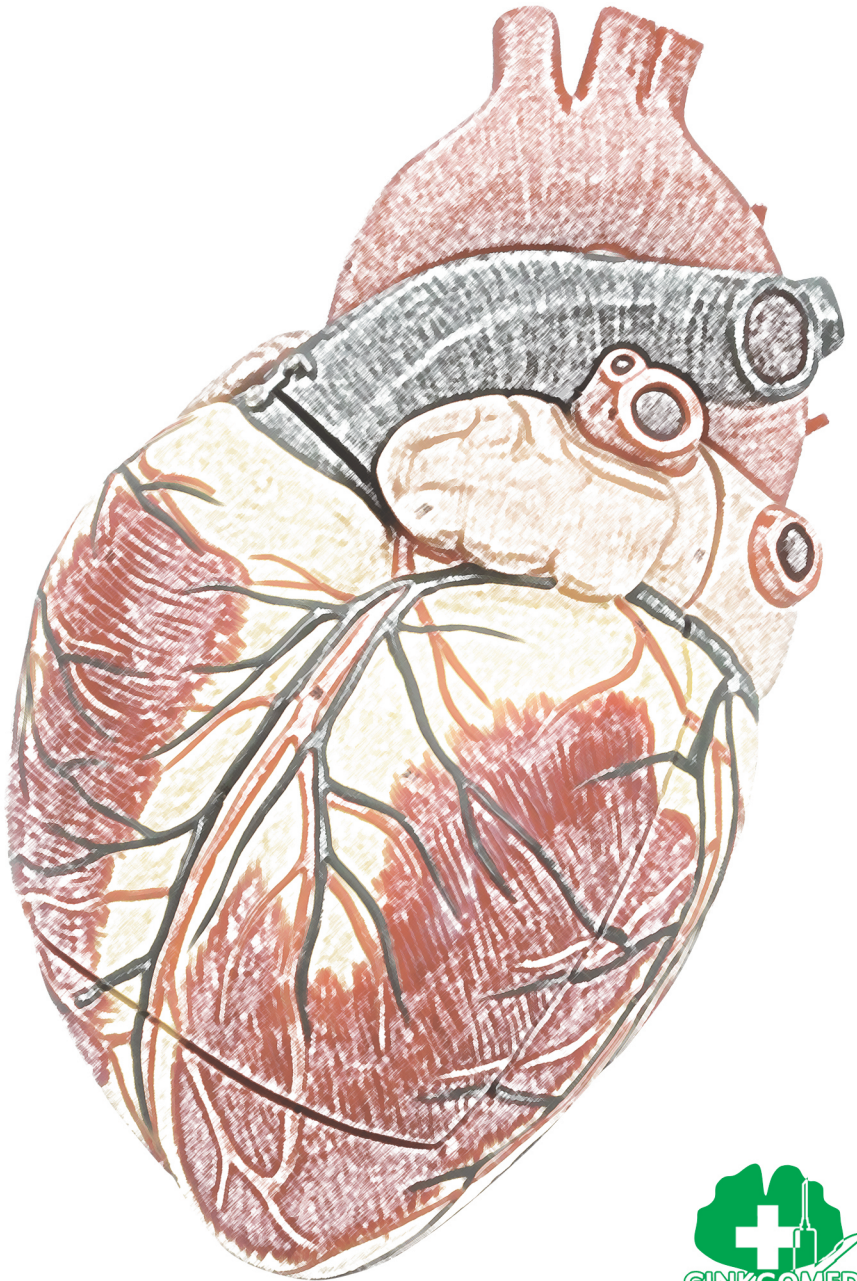


# TEACHING MODELS



## GM-050001

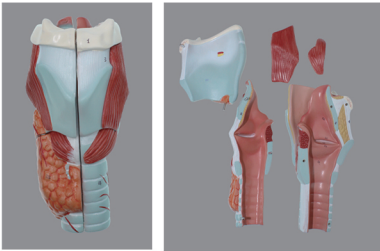
### Nasal and Oral Cavities Through Throat and Pharynx



A representation of mid-sagittal section cut through nasal cavity, oral cavity and throat, PVC, life size.

## GM-050002

### Enlarged Larynx



A representation of human larynx, PVC, disassemblable into 5 parts, 2X life size.

## GM-050003

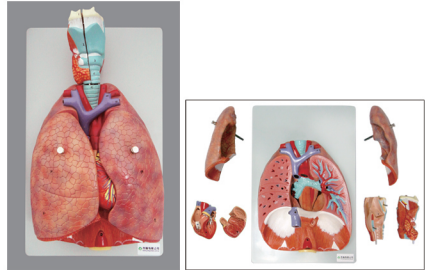
### Segmental Bronchial Tree



A representation of human bronchial tree, encapsulated with transparent lung cover, PVC, life size.

## GM-050004

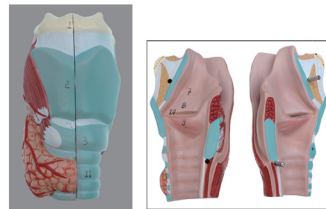
### Lungs and Heart with Larynx, 7 parts



A representation of human lungs and heart with larynx, PVC, disassemblable into 7 parts, life size.

## GM-050005

### Larynx



A representation of human larynx, PVC, disassemblable into 2 parts, life size.

## GM-050006

### Relief Model of Respiratory System



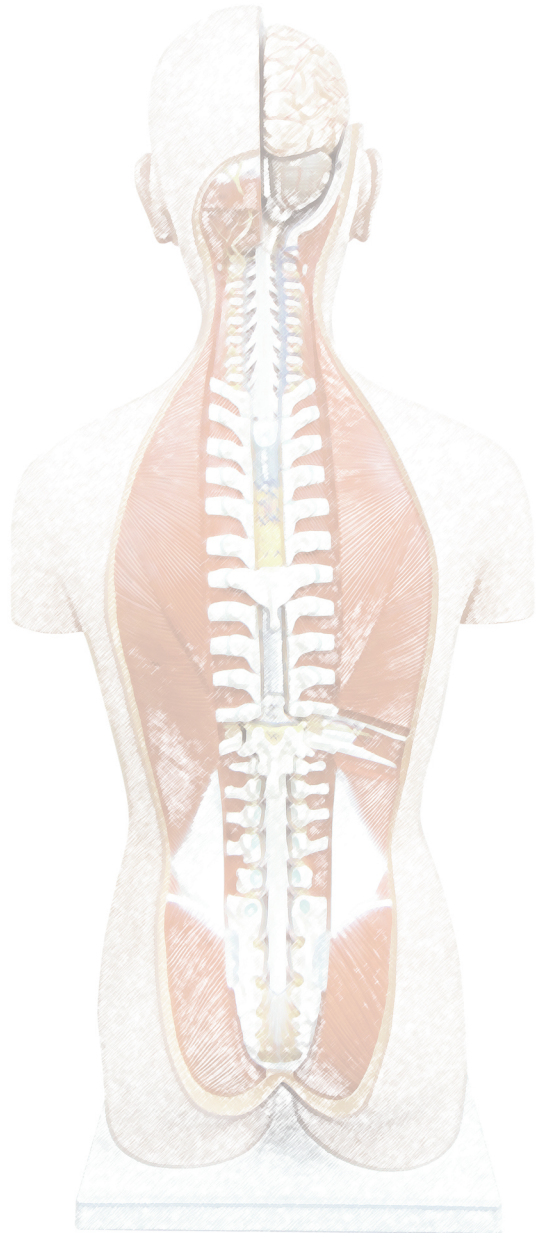
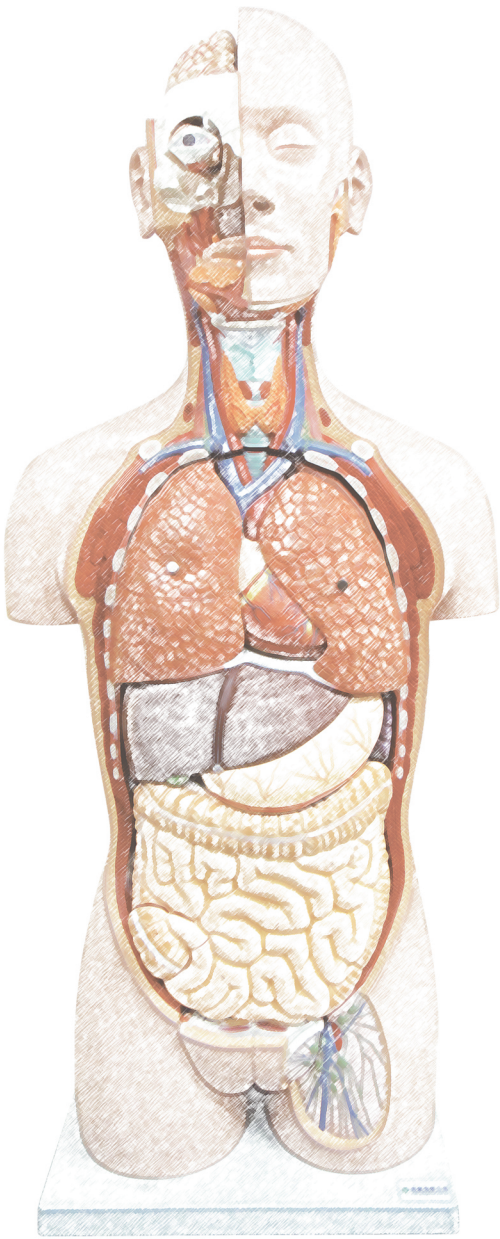
A representation of human respiratory system illustrating functional anatomy, PVC.

## GM-050007

### Enlarged Alveoli



A representation of human respiratory system illustrating functional anatomy, PVC.



## GINGKOMED COMPANY

Tel: +886-2-27041032

Fax: +886-2-27040645

<http://www.gingkomed.com.tw>

E-mail: [info@gingkomed.com.tw](mailto:info@gingkomed.com.tw)

11-1, No.5, Sec.2, An-He Road, Da-An District, Taipei City (106), Taiwan